

ARCHITECTURE PORTFOLIO

YANISA NIENNATTRAKUL

B.Sc. in Architectural Design, Chulalongkorn University, Bangkok, Thailand
MA in History and Critical Thinking, Architectural Association School of Architecture, London, UK
Master of Architecture, The University of Melbourne, Melbourne, Australia
PhD Candidate, School of Architecture, The University of Sheffield, Sheffield, UK

01



THE TRAIL OF PATTANI'S TALES, PATTANI, THAILAND (2016)

02



THE GIFT: PERFECTION OF GIVING, BANGKOK, THAILAND (2012)

03



KON-KAEN COMMUNITY PROJECT, KON-KAEN, THAILAND (2013)

04



KHAOYAI COMMUNITY PROJECT, KHAOYAI, THAILAND (2011)

05



THE MUSEUM OF AGITATION, MELBOURNE, AUSTRALIA (2015)

06



CAPTAIN BUSH HOUSE, BANGKOK, THAILAND (2012)

07



URBAN FIREFLIES, BANGKRACHAO, THAILAND (2012)

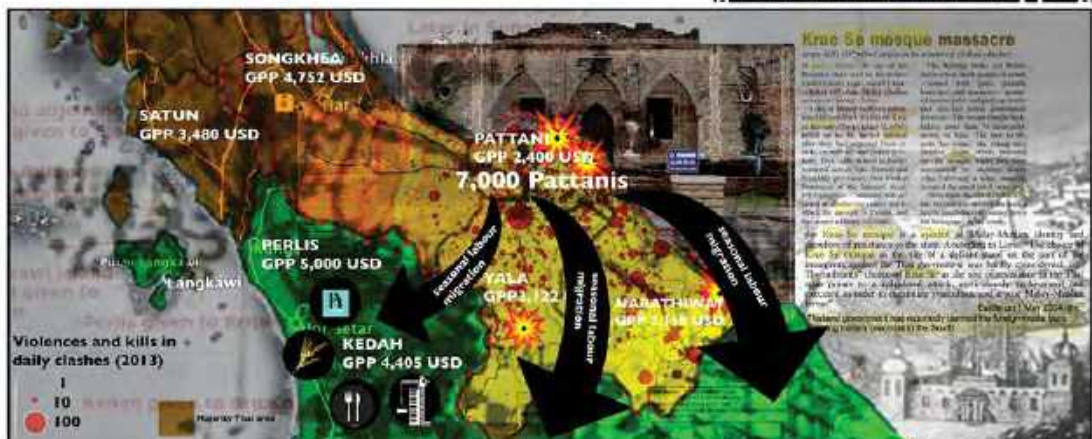
08



THE ASSEMBLAGE PROJECTION (2012)



global scale critical mapping



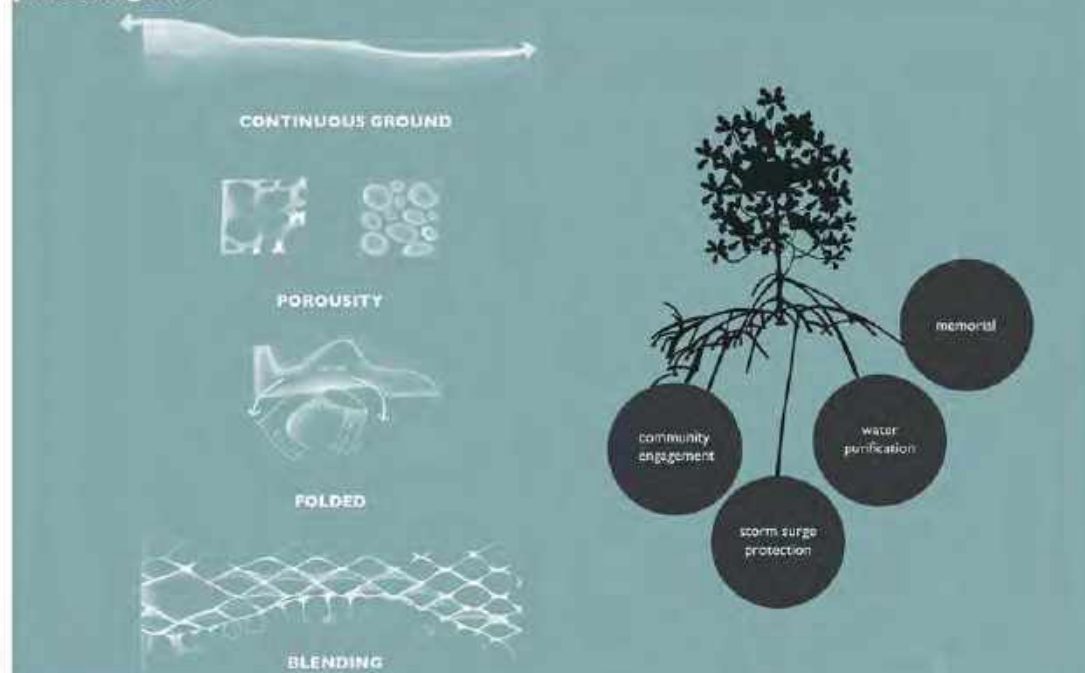
regional scale critical mapping



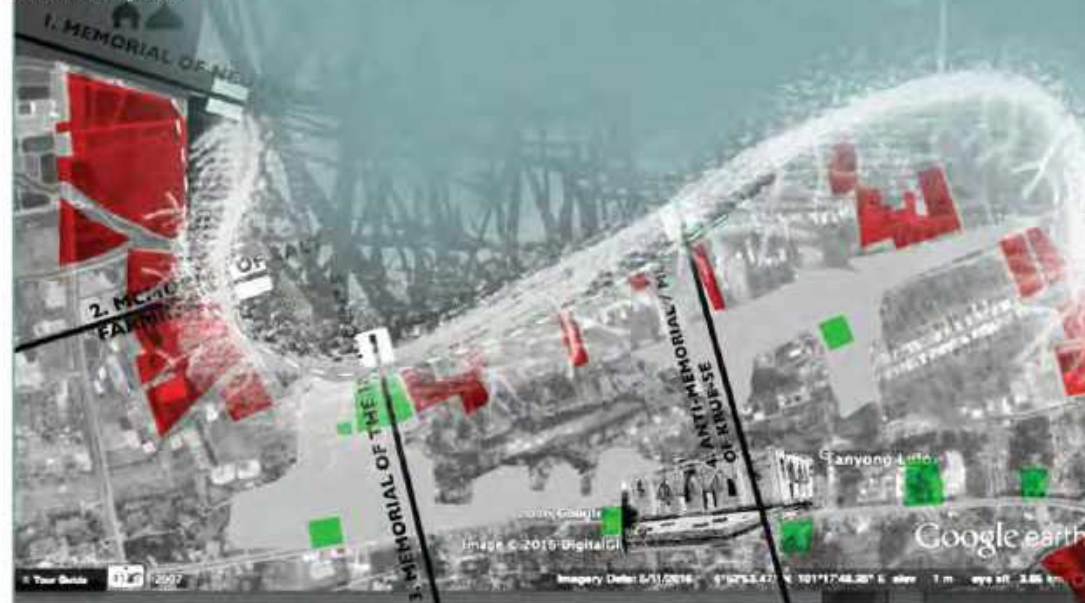
local scale critical mapping



parti diagrams



site analysis



AGENTS OF FORGETTING

from 'The Art of Forgetting' by Adrian Forty

seperation



tension between



exclusion



iconoclasm



30 m - 50 m

mangrove
Covered by tides twice a day, exposed for greater periods of time.

250 m

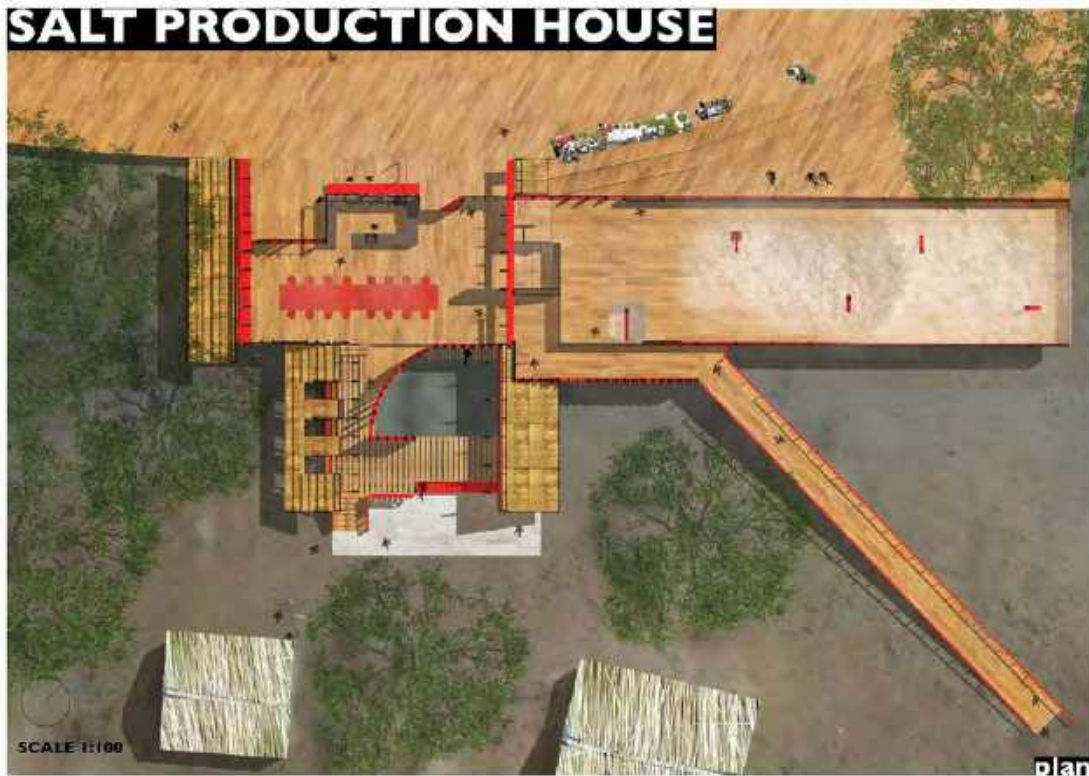
saltmarsh / salt farming
Lower levels covered by tides for short periods twice daily, upper levels covered only once or twice a year

residential area
Never covered by the tides

ANNUALLY



SALT PRODUCTION HOUSE



ANTI-MEMORIAL OF KRUE-SE



SALT PRODUCTION HOUSE



ANTI-MEMORIAL OF KRUE-SE



section B



corridor perspective



media center perspective



public square perspective



krue-se mosque

section A

B.sc. final project supervised by Narin Palanuruksa

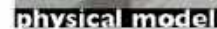
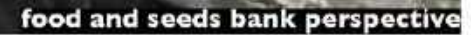
Since we live in the age where scientific rationality and materialistic outlook are driving our choices of living and greatly affecting our built environments this studio presents students with an opportunity to 'create' with an alternative objective for society. This hypothetical design problem asks students to establish a clear relationship or dialogue between human and nature since architecture is the most instantaneous mediator between the two. Whether allowing human to dominate over nature or vice versa, or to have them be of equal stands, each student shall take on a position towards presenting an argument or a thesis statement and test it through architectural design. The proposed architecture shall not seek to imitate or copy the traditional architectural languages of Buddhism.

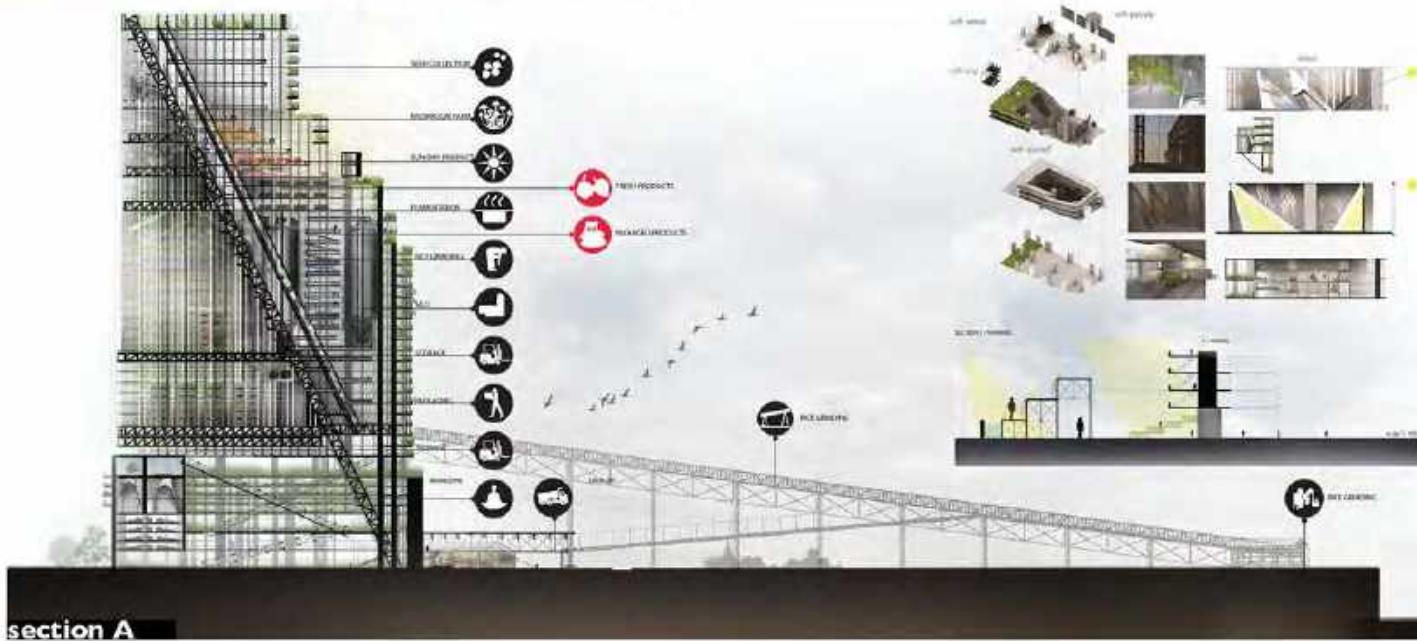
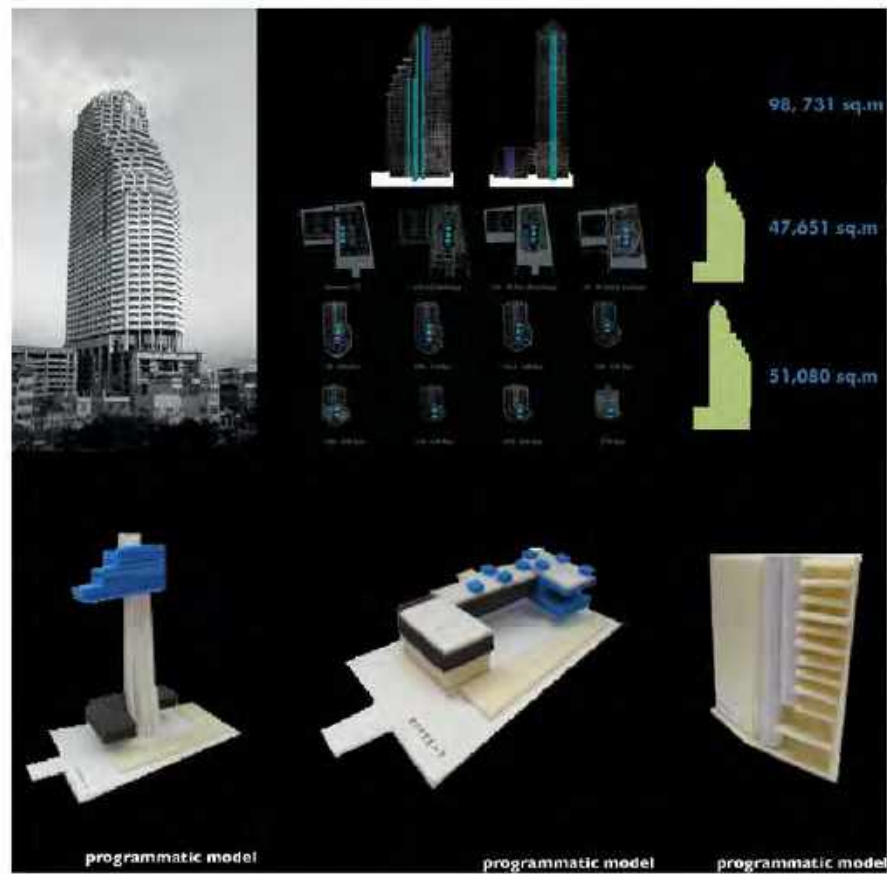
[illegible]

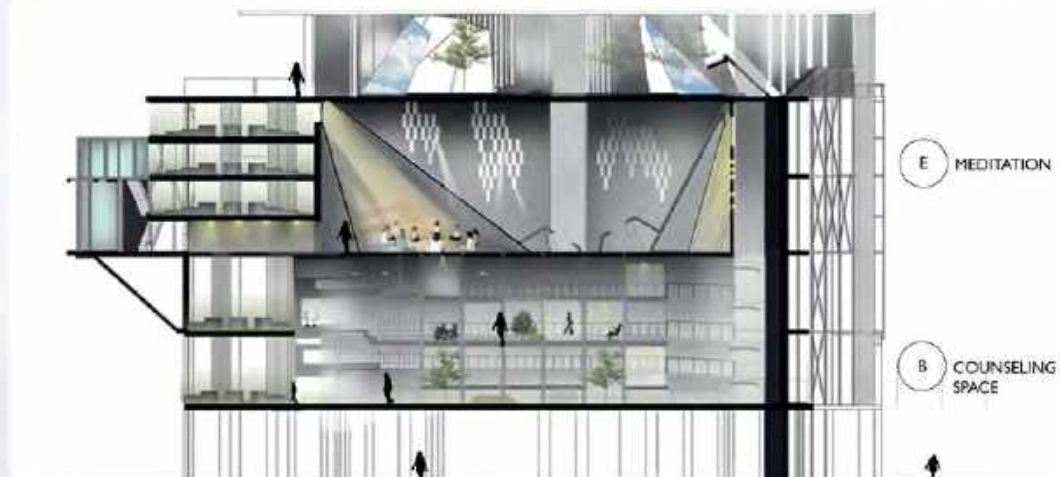
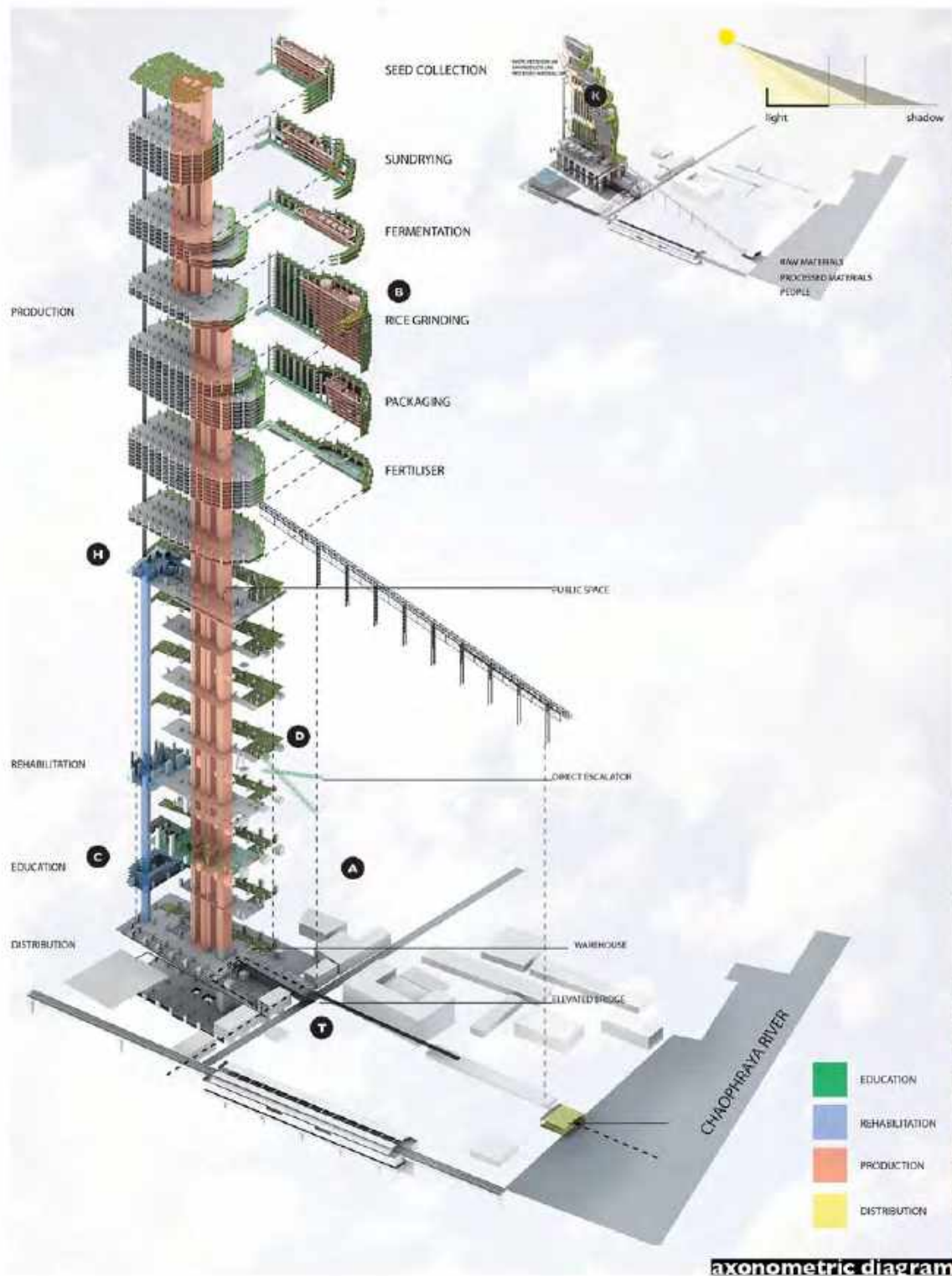
The diagram illustrates the three pillars of sustainable development, each represented by a circular icon with a globe and a specific goal:

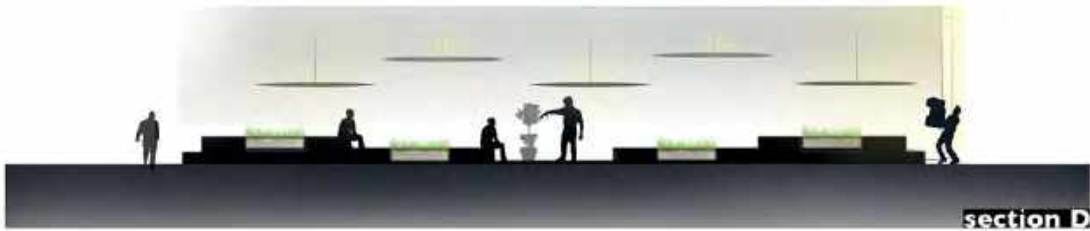
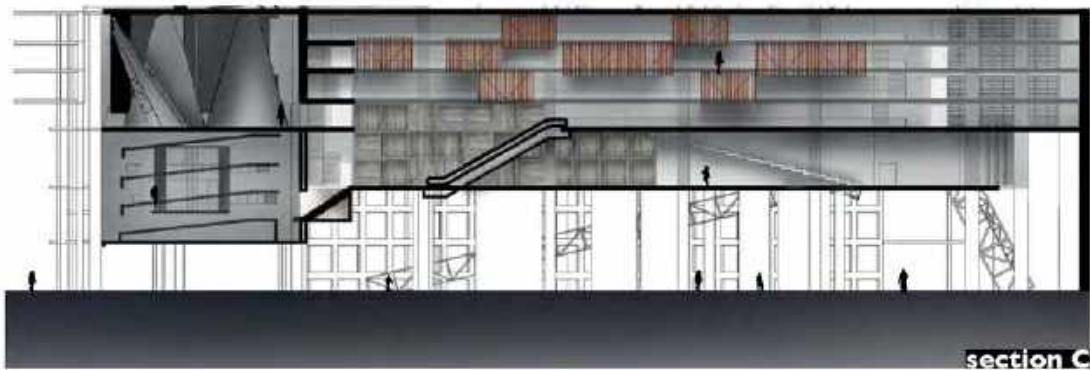
- Economic:** The first icon shows a globe with a green background and the text "THE GUY OF SUSTAINABLE DEVELOPMENT".
- Social:** The second icon shows a globe with a blue background and the text "THE GUY OF SUSTAINABLE DEVELOPMENT".
- Environmental:** The third icon shows a globe with a green background and the text "THE GUY OF SUSTAINABLE DEVELOPMENT".

rehabilitation perspective









PROJECT 03: KON-KAEN COMMUNITY PROJECT, THAILAND

Nong-Wang, Konkaen, Thailand: 1
 Patsee Theparak 1, Konkaen, Thailand: 2
 Theparak 2, Konkaen, Thailand: 3
 Theparak 4, Konkaen, Thailand: 4
 Lah-Mung, Konkaen, Thailand: 5
 Theparak 5, Konkaen, Thailand: 6



Kon/Jing/Jee is an independent architects group that has the same ambitious goal to push a bottom-up strategies by a participatory process. The community will participate and conduct directions, strategies by using design as a tool and ways to improve their quality of life both physically and mentally.

The first phase of communities that Kon/Jing/Jee acted on site were 5 communities along a railway property which were affected by a development of fast railway for the future AEC development. By this, Kon/Jing/Jee had a duty to help the community by arranging documents for renting the land from the State Railway of Thailand. The documents were composed of a new community plan, infrastructure plan, electricity plan, construction drawings and design a new houses for extending township price from Baan Mankong Project authorized by The Community Organizations Development Institute (CODI).



community planning



exploded axonometric drawing



participatory 'home' drawings



Theparak4 community rendering



participatory processes presentation



participatory planning models

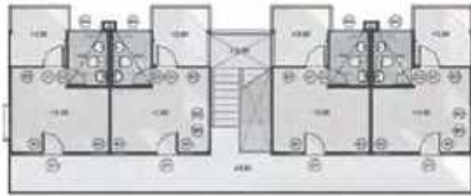
PROJECT 04: KHAOYAI COMMUNITY PROJECT, THAILAND

community project subject supervised by Moe Ekapob S

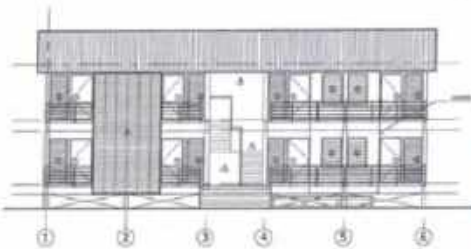
The project was authorized by Thai Land department of highways. The group was assigned to design the whole master plan of the site which was planned to be a rest area with private areas for officers and workers. However the old worker houses was in fire the month earlier. So the first phase was to design and build a worker house. The site was surrounded by hills and size of hills. With limited amount of budget, it was very challenging to design concern about natural view and produce shared space.



ชั้นที่ 1



ชั้นที่ 2



Day 1

Day 2

Day 3

Day 4

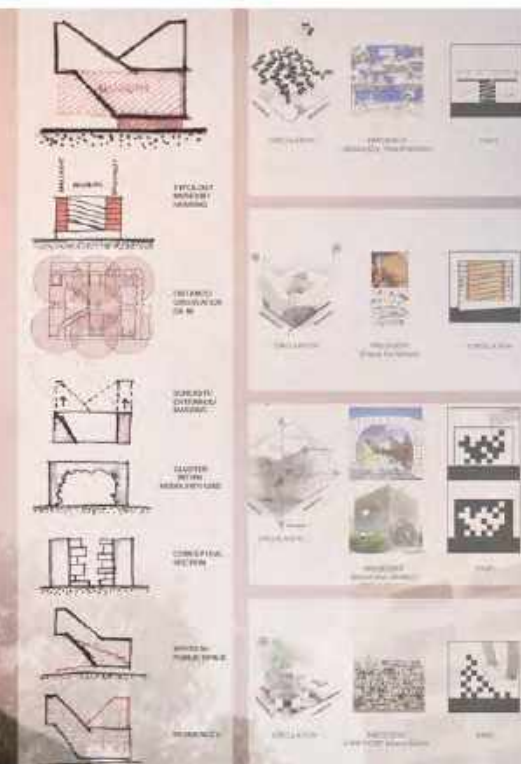
Day 5

PROJECT 05:

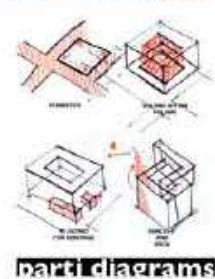
THE MUSEUM OF AGITATION

Multi-generation housing project tutored by Ben Percy and Ellen Terril

Inspired by a typology of a museum, this multi-level project with housing occupies one side of wide 'streets in the sky'. It is designed to provide residents with direct pedestrian access to activities intended to give the community a strong sense of identity. The cluster of 'interactions', at the end, will blur tensions between young and old, public and private.



SITE ANALYSIS:
URBAN
ANALYSIS





atrium perspective



sectional perspective



2ND FLOOR PLAN
SCALE 1:200



ETH FLOOR PLAN
SCALE 1:200



ELDERLY UNIT AND CORRIDOR

STUDENT UNIT AND CORRIDOR

CLOSE TO OTHER PROGRAMS (GALLERY)



elevation



memory lane perspective



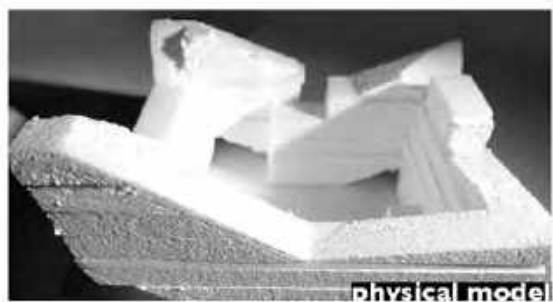
market hall perspective



art gallery perspective



corridor perspective



PROJECT 06:

CAPTAIN BUSH'S HOUSE RENOVATION

Kudakahn Co.Ltd, cooperated with the Crown Property Bureau, Thailand

When a historical building since King Rama V period (1853-1910) is planned to be a contemporary luxurious restaurant, measurements in depth analysis, and historical documentation are needed to support the design processes and historical renovations. The research processes started from analysing historical photographs in different periods. The history of the building is studied to acknowledge the true history of the building in the past and to be able to restore and recover the period of King Rama V. Main responsibilities are the analysis, design, and construction of the building, including the restoration and researching historical archive and documents.



site plan and floor plans



4TH IAAC 'CITY SENSE' COMPETITION with Naphat Chongrattanakul

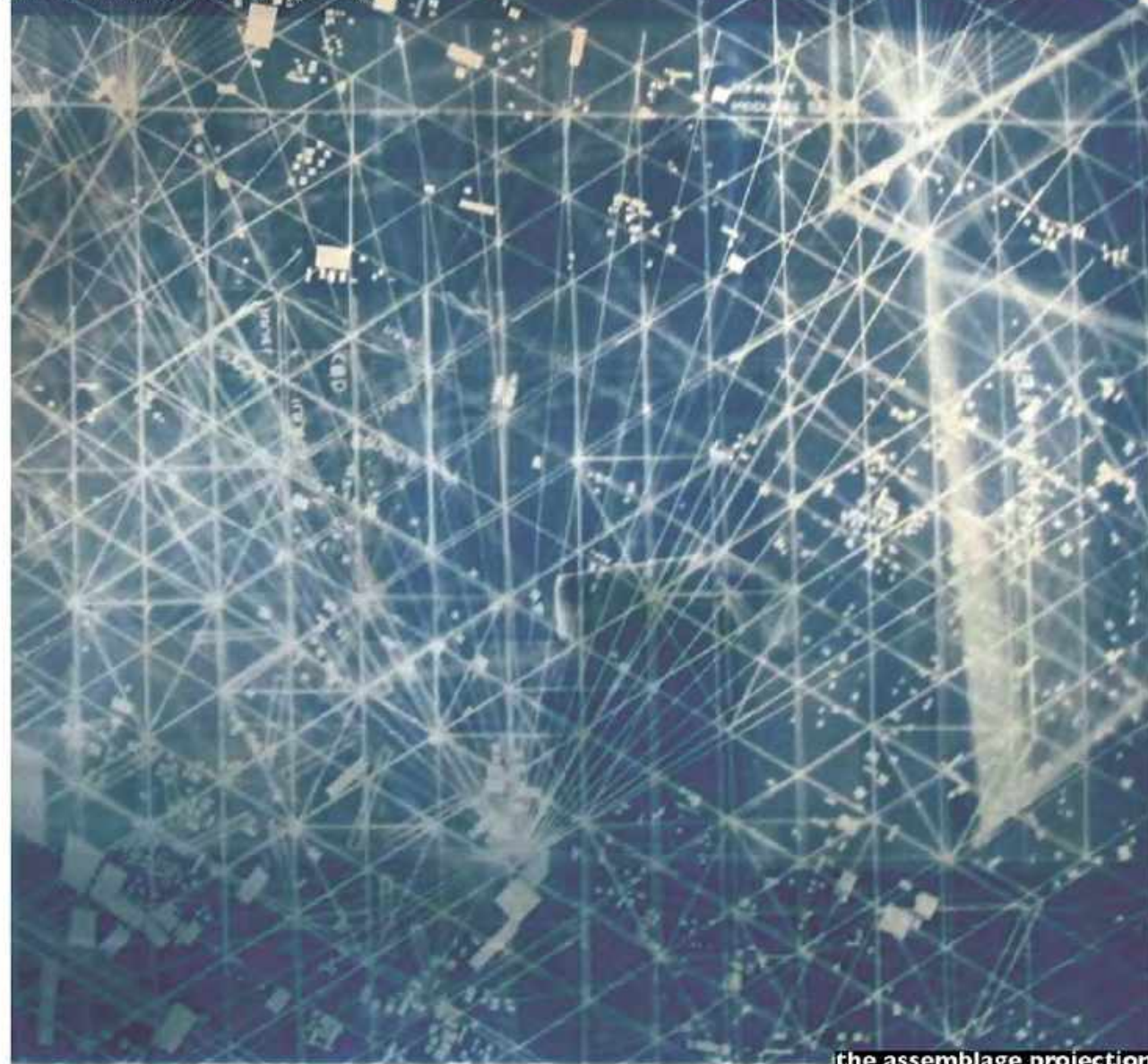
[illegible]

PROJECT 08:

THE ASSEMBLAGE PROJECTION

The critique of architectural representation through a reading of Robin Evans, "Translations from Drawing to Building" in *Selected Essays*, and my project experimented with a system of blueprinting in diagrammatic ways using blueprint as a medium for representation, design, fabrication, and the idea of assemblage. The investigation suggests that there is more within an architect's vision than what can be presented in a set of architectural drawings.

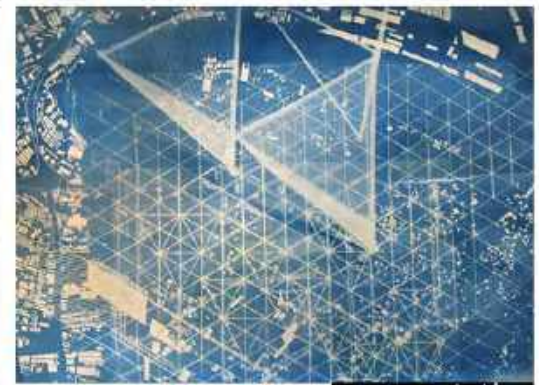
'Assemblage Projection' acts as an 'assemblage' of two dimensional projection of diagrams which describes concepts and ideas, as well as three dimensional projection to describe the quality of space inside. To conclude this project, I believe that 'assemblage projection' has a potential to develop the way to approach architectural representation beyond existing ones that include all aspects such as representation, design, and fabrication in the same drawing.



the assemblage projection



'section of section'



representation



design (space and time)



fabrication (kit of parts)



materials speculation

VENUE:
Arts Tower,
The University of Sheffield
Rooms 13.18 and 13.19

MANIFESTO/S

PHD CONFERENCE
FRIDAY 27TH - SATURDAY 28TH APRIL 2018

FRI 27TH:
PRESENTATION SESSIONS
(9:30 - 16:00)

MIXED METHODS IN RESEARCH

TECHNICAL ENVIRONMENT
RESEARCH

HUMAN ENVIRONMENT & LIVEABILITY

CO-PRODUCTION OF SPACE

SAT 28TH: WORKSHOPS SESSIONS

RESEARCH WRITING WORKSHOP (9:30-12:00)

WITH **MARIE-LOUISE RICHARDS**
KTH Royal Institute of Technology, Sweden

RESEARCH METHODOLOGY WORKSHOP (12:30-15:00)

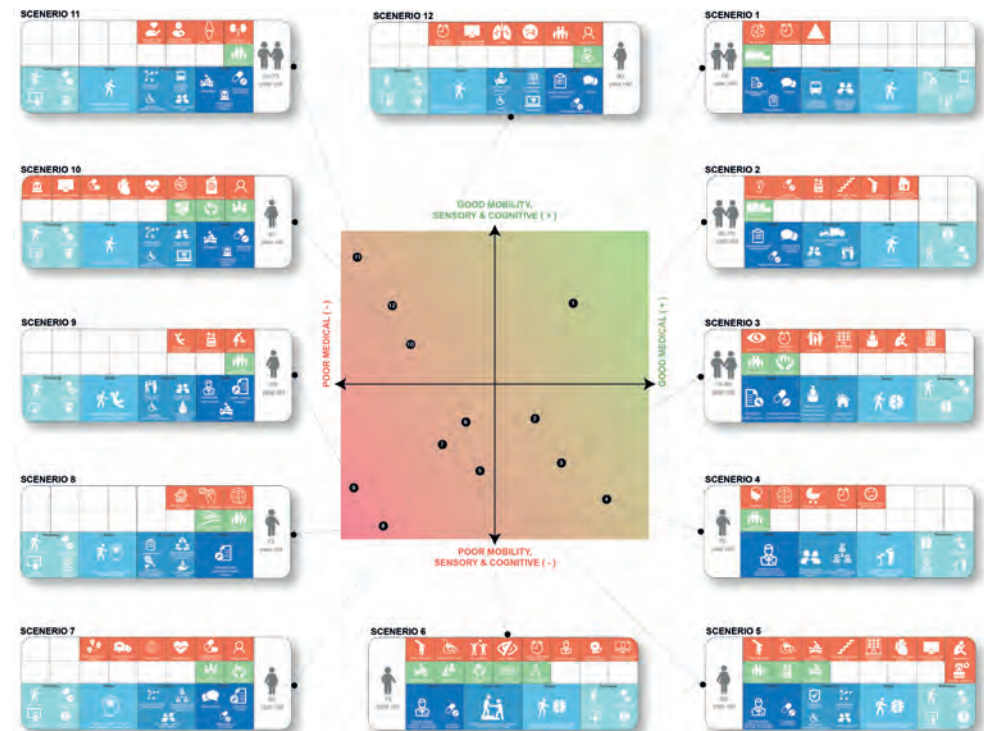
WITH **PROF. GRAINNE HASSETT**
University of Limerick, Ireland

REGISTER FOR WORKSHOP AT
<http://manifestos.group.shef.ac.uk/>

MANIFESTO/S PhD
Conference Poster,
2018



AgeingHood Project Logo, 2020



Infographic for ODESSA Conference and Booklet, 2018